

# BROOKLYN DOORS<sup>®</sup>

INTERIOR & EXTERIOR DOORS

C A T A L O G



888.703.0099

WWW.DOORSINSTOCK.COM



## Welcome to Brooklyn Doors

A company conceived on a very simple concept, offer the customer the best possible product, for the best possible price while providing the best possible service. With 10 years of experience in the door and hardware industry we are old enough to know what we're doing but young enough to be relative. Innovation is key in our business model we are continually searching for new technology to better serve the customer. We are not just a website either Brooklyn doors and hardware operates a brick and mortar showroom displaying hundreds of door and hardware models at:

2501 Coney Island Avenue  
Brooklyn, NY 11223  
718.690.3030

and

300 Farmingdale Rd  
Farmingdale, NY 11735  
516.701.0088

We carry a vast and extensive range of interior doors and exterior doors of all types and brands. These are doors that are acquired from all over the world, chosen only if they fit within our standards of quality. Additionally, as the name suggests, we also have a range of cabinet hardware along with doors. This hardware is also based on high-quality standards.

### A Diverse Line of Doors and Hardware

Brooklyn doors and hardware displays a curated collection of the finest door and hardware brands in all pricing categories. We believe that a great product does not have to carry a great price tag and our goal is to offer amazing value in our products.

Thank you for giving us the opportunity to serve your door and hardware needs.

Italia Series	04
Italia Flush Series	06
Italia Vetro Series	10
Italia Stile Series	14
Triplex Series	18
Stile Series	22
Glam Series	26
High Gloss Laminated Series	28
Laminated Series	30
American Standard Interior Doors	36
European Interior Doors	38
Inox Series Exterior Doors	54
Wrought Iron Exterior Doors	58
Fiberglass Exterior Doors	64
Sliding, Bi-Fold & Swing Closet Doors	68
Garage Doors	76
Storm Doors	80
Patio Doors	82
Hardware	84
Door Construction Info	87
Installation Info	90



## Italia Series Interior Doors

The Italia Interior Door Series offers class and quality in both design and function, with its rich colors and slim, vertical glass insert. Made in Europe and proudly designed and assembled in the USA, its Premium Smart Core construction and PPL finish offer durability and substantial sound dampening benefits. The Italia Series is available in 6 standard widths (18", 24", 28", 30", 32" and 36") and 3 heights (80", 84" and 96").

Available in five luxurious colors, interchangeable glass, optional aluminum edging, myriad design options, and a 3-Year Warranty, making the Italia Series a Nova best seller.

## Technical Specifications

Available Colors	Prestige Brown, Light Gray, Swiss Elm, Alaskan White, Premium Wenge
Finish	PPL High Endurance (Renolit - Germany)
Door Construction	Solid Wood Skeleton with High Density Filler (Smart Core) Sound Proof Insulation (see page 53 for details)
Door Slab Height	80, 84 and 96 inches
Door Slab Width (exact)	17-7/8", 23-7/8", 27-7/8", 29-7/8", 31-7/8", 35-7/8"
Door Thickness	1-3/4 inches (45mm)
Door Slab Weight	Medium Size - 70 Pounds
Jamb Width	Telescopic 4" - 5-1/2" X 86" and 100" (extension available for over 5-1/2")
Door Molding Width	3" - L-Shaped, 86" and 100" Length, 5/8" Thick
Custom Size	Any Width and Height Up to 96 Inches
Custom Color	Over 50 Colors Available for Special Order (Renolit Catalogs)
Sliding Jamb	Flat Jamb 4"-5 1/2", 3/4" thick (Bypass/Sliding) Extensions Available for over 5 1/2"
Pocket Jamb	3 Split Jambs 1 Flat Jamb (Per Single Door), 3/4" thick
Floor Baseboard	4" X 96" X 5/8" All Stock colors Available
Astragal	Double Door Astragal (Covers Gap Between the 2 doors)
2 Sided Panel	3/8" X 36" X 96" For Custom Sliding/Bifold/Pivot closet Doors
Extension	2 1/2" X 5/8" X 86" and 100" (Used For Walls over 5 1/2" Thick)
Stripe Finish	Brushed Anodized, Shine Gold Anodized, Brushed Gold Anodized, Brilliant Anodized, Pre-Painted Matte Black, Pre Painted Brilliant Black
Warranty	Leading 3-Year Structural Warranty

### Available Glass Options



Black



Clear



Frosted

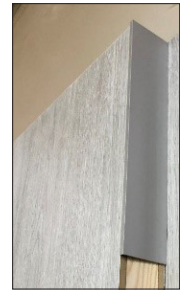


White



**Features:**

- Premium Solid Core Construction
- Five Finish Options: Prestige Brown, Light Gray, Swiss Elm, White, Premium Wenge
- Premium PPL Laminated Finish
- Glass Options Available
- Six Stripe Finishes Available for Select Models
- Proudly Designed and Assembled in the USA and Overseas
- 3-Year Warranty



Optional Aluminum Edging



ITALIA LIGHT GREY



ITALIA SWISS ELM



ITALIA PRESTIGE BROWN



ITALIA PREMIUM WENGE



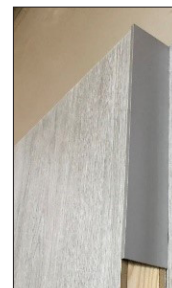
ITALIA ALASKAN WHITE



# Italia Flush Series Interior Doors

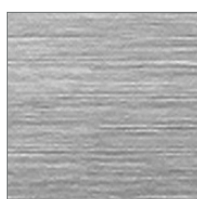
The Italia Flush Series strikes a perfect balance between modern and classical design. With five different PPL finish color options, and 10 different design options, the Italia Flush Series is highly customizable to find the perfect fit for you and your home.

It also offers all the same construction benefits as all Italia series doors, such as Premium Smart Core construction, availability in 6 standard widths and 80", 84" or 96" heights, 45mm thickness, design and assembly in the USA. Available colors include Alaskan White, Light Gray, Prestige Brown, Swiss Elm and Premium Wenge

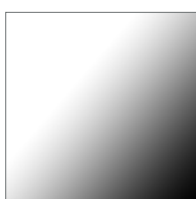


Optional Aluminum Edging

## Stripe Finishes for Select Models



Brushed  
Anodized



Brilliant  
Anodized



Brushed Gold  
Anodized



Shine Gold  
Anodized



Pre Painted  
Matte Black



Pre Painted  
Brilliant Black



ITALIA FLUSH 01 PB



ITALIA FLUSH 02 PB



ITALIA FLUSH 03 PB



ITALIA FLUSH 04 PB



ITALIA FLUSH 05 PB



ITALIA FLUSH 06 PB



ITALIA FLUSH 07 PB



ITALIA FLUSH 08 PB



ITALIA FLUSH 09 PB



ITALIA FLUSH 10 PB

## ITALIA FLUSH SERIES



ITALIA FLUSH 01 SE



ITALIA FLUSH 02 SE



ITALIA FLUSH 03 SE



ITALIA FLUSH 04 SE



ITALIA FLUSH 05 SE



ITALIA FLUSH 06 SE



ITALIA FLUSH 07 SE



ITALIA FLUSH 08 SE



ITALIA FLUSH 09 SE



ITALIA FLUSH 10 SE







ITALIA FLUSH 01 LG



ITALIA FLUSH 02 LG



ITALIA FLUSH 03 LG



ITALIA FLUSH 04 LG



ITALIA FLUSH 05 LG



ITALIA FLUSH 06 LG



ITALIA FLUSH 07 LG



ITALIA FLUSH 08 LG



ITALIA FLUSH 09 LG



ITALIA FLUSH 10 LG



ITALIA FLUSH 01 PW



ITALIA FLUSH 02 PW



ITALIA FLUSH 03 PW



ITALIA FLUSH 04 PW



ITALIA FLUSH 05 PW



ITALIA FLUSH 06 PW



ITALIA FLUSH 07 PW



ITALIA FLUSH 08 PW



ITALIA FLUSH 09 PW



ITALIA FLUSH 10 PW



ITALIA FLUSH 01 AW



ITALIA FLUSH 02 AW



ITALIA FLUSH 03 AW



ITALIA FLUSH 04 AW



ITALIA FLUSH 05 AW



ITALIA FLUSH 06 AW



ITALIA FLUSH 07 AW



ITALIA FLUSH 08 AW



ITALIA FLUSH 09 AW



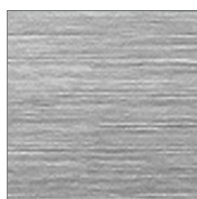
ITALIA FLUSH 10 AW

# Italia Vetro Series Interior Doors

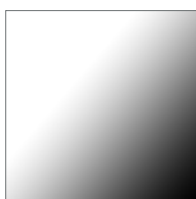
The Italia Vetro Series offers a clean, modern, yet comfortable feel for your office and home. Completely and proudly made and assembled in the US, the Vetro series offers 11 model options which are extremely customizable to your taste and style.

Available in the same five luxurious colors, our unique design options incorporate top quality materials, such as triplex glass available in white, clear and frosted, crafted with expertise. All components, including 80", 84" and 96" stiles are always kept in stock, so the lead time for your Italia Vetro is kept to a minimum.

## Stripe Finishes for Select Models



Brushed  
Anodized



Brilliant  
Anodized



Brushed Gold  
Anodized



Shine Gold  
Anodized



Pre Painted  
Matte Black



Pre Painted  
Brilliant Black

## Available Glass Options



Black



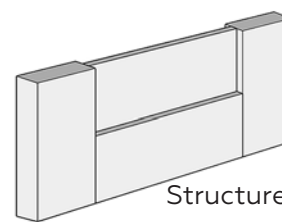
Clear



Frosted



White



Structure







VETRO 01 LG



VETRO 1H LG



VETRO 2HC LG



VETRO 2H LG



VETRO 3H LG



VETRO 1 LITE LG



VETRO 2 LITE LG



VETRO 3 LITE LG



VETRO 4 LITE LG



VETRO 5 LITE LG



VETRO 6 LITE LG



VETRO 01 PB



VETRO 1H PB



VETRO 2HC PB



VETRO 2H PB



VETRO 3H PB



VETRO 1 LITE PB



VETRO 2 LITE PB



VETRO 3 LITE PB



VETRO 4 LITE PB



VETRO 5 LITE PB



VETRO 6 LITE PB



VETRO 01 SE



VETRO 1H SE



VETRO 2HC SE



VETRO 2H SE



VETRO 3H SE



VETRO 1 LITE SE



VETRO 2 LITE SE



VETRO 3 LITE SE



VETRO 4 LITE SE



VETRO 5 LITE SE



VETRO 6 LITE SE





VETRO 01 PW



VETRO 1H PW



VETRO 2HC PW



VETRO 2H PW



VETRO 3H PW



VETRO 1 LITE PW



VETRO 2 LITE PW



VETRO 3 LITE PW



VETRO 4 LITE PW



VETRO 5 LITE PW



VETRO 6 LITE PW



VETRO 01 AW



VETRO 1H AW



VETRO 2HC AW



VETRO 2H AW



VETRO 3H AW



VETRO 1 LITE AW



VETRO 2 LITE AW



VETRO 3 LITE AW



VETRO 4 LITE AW



VETRO 5 LITE AW



VETRO 6 LITE AW



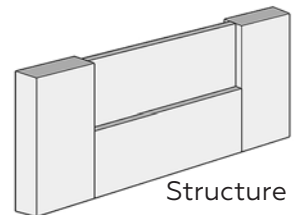
# Italia Stile Series Interior Doors

The Italia Flush Series strikes a perfect balance between modern and classical design. With five different PPL finish color options, and 10 different design options, the Italia Flush Series is highly customizable to find the perfect fit for you and your home.

It also offers all the same construction benefits as all Italia series doors, such as Premium Smart Core construction, availability in 6 standard widths and 80", 84" or 96" heights, 45mm thickness, design and assembly in the USA. Available colors include Alaskan White, Light Gray, Prestige Brown, Swiss Elm and Premium Wenge



Optional Aluminum Edging

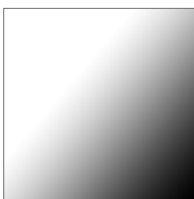


Structure

## Stripe Finishes for Select Models



Brushed  
Anodized



Brilliant  
Anodized



Brushed Gold  
Anodized



Shine Gold  
Anodized



Pre Painted  
Matte Black



Pre Painted  
Brilliant Black



ITALIA STILE 01 LG



ITALIA STILE 1H LG



ITALIA STILE 2HC LG



ITALIA STILE 2H LG



ITALIA STILE 3H LG



ITALIA STILE 1L LG



ITALIA STILE 2L LG



ITALIA STILE 3L LG



ITALIA STILE 4L LG



ITALIA STILE 5L LG



ITALIA STILE 6L LG

## ITALIA STILE SERIES



ITALIA STILE 01 PB



ITALIA STILE 1H PB



ITALIA STILE 2HC PB



ITALIA STILE 2H PB



ITALIA STILE 3H PB



ITALIA STILE 1L PB



ITALIA STILE 2L PB



ITALIA STILE 3L PB



ITALIA STILE 4L PB



ITALIA STILE 5L PB



ITALIA STILE 6L PB







ITALIA STILE 01 SE



ITALIA STILE 1H SE



ITALIA STILE 2HC SE



ITALIA STILE 2H SE



ITALIA STILE 3H SE



ITALIA STILE 1L SE



ITALIA STILE 2L SE



ITALIA STILE 3L SE



ITALIA STILE 4L SE



ITALIA STILE 5L SE



ITALIA STILE 6L SE







ITALIA STILE 01 PW



ITALIA STILE 1H PW



ITALIA STILE 2HC PW



ITALIA STILE 2H PW



ITALIA STILE 3H PW



ITALIA STILE 1L PW



ITALIA STILE 2L PW



ITALIA STILE 3L PW



ITALIA STILE 4L PW



ITALIA STILE 5L PW



ITALIA STILE 6L PW



ITALIA STILE 01 AW



ITALIA STILE 1H AW



ITALIA STILE 2HC AW



ITALIA STILE 2H AW



ITALIA STILE 3H AW



ITALIA STILE 1L AW



ITALIA STILE 2L AW



ITALIA STILE 3L AW



ITALIA STILE 4L AW



ITALIA STILE 5L AW



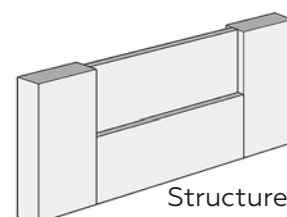
ITALIA STILE 6L AW

# Triplex Series Interior Doors

One of the most popular Nova Doors and Hardware interior door ranges, the Triplex Series maintains an open, flowing atmosphere, even with the door closed. These modern interior doors are constructed of solid wood, MDF, and fused triplex frosted glass. All 80" Triplex doors are available in 6 standard widths and are made in Europe. The 84" and 96" Triplex Series also have many customizable design options, and each door is made in America and assembled by hand, with the highest expertise and care.

## Features:

- Sleek White UV Lacquered Paint Finish
- Glass Options Available
- Six Stripe Finishes Available for Select Models
- Proudly Designed and Assembled in the USA And Overseas
- 3-Year Warranty



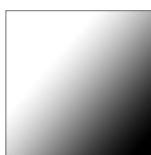
## Technical Specifications

Available Colors	White
Finish	Laminated Soft White Finish
Door Construction	Solid Pine Wood and Glass (see page 53 for details)
Door Slab Height	80, 84 and 96 inches
Door Slab Width (exact)	17-7/8", 23-7/8", 27-7/8", 29-7/8", 31-7/8", 35-7/8"
Door Thickness	1-3/4 inches (45mm)
Door Slab Weight	Medium Size - 90 Pounds
Jamb Width	Telescopic 4"-5 1/2" X 86" and 100" (Extensions Available for over 5 1/2")
Door Molding Width	3" - L-Shaped 86" and 100" Length 5/8" Thick
Custom Size	Any Width up to 38" and Height Up to 96" Inches
Custom Color	Over 200 Colors Available for Special Order (PROUD Catalog)
Sliding Jamb	Flat Jamb 4"-5 1/2", 3/4" thick (Bypass/Sliding) Extensions Available for over 5 1/2"
Pocket Jamb	3 Split Jambs 1 Flat Jamb (Per Single Door), 3/4" thick
Astragal	Double Door Astragal (Covers Gap Between the 2 doors)
Extension	2 1/2" X 5/8" X 86" and 100" (Used For Walls over 5 1/2" Thick)
Warranty	Leading 3-Year Structural Warranty

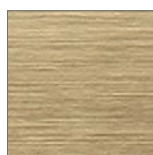
## Stripe Finishes for Select Models



Brushed  
Anodized



Brilliant  
Anodized



Brushed Gold  
Anodized



Shine Gold  
Anodized



Pre Painted  
Matte Black



Pre Painted  
Brilliant Black

## Available Glass Options



Black



Clear



Frosted



White



TRIPLEX-001 WHITE



TRIPLEX-002 WHITE



TRIPLEX-003 WHITE



TRIPLEX-004 WHITE



TRIPLEX-005 WHITE



TRIPLEX-006 WHITE



TRIPLEX-007 WHITE



TRIPLEX-008 WHITE



TRIPLEX-009 WHITE



TRIPLEX-012 WHITE





TRIPLEX-013 WHITE



TRIPLEX-015 WHITE



TRIPLEX-017 WHITE



TRIPLEX-018 WHITE



TRIPLEX-020 WHITE



TRIPLEX-021 WHITE



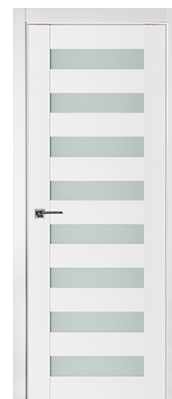
TRIPLEX-022 WHITE



TRIPLEX-023 WHITE



TRIPLEX-024 WHITE



TRIPLEX-025 WHITE





TRIPLEX-029 WHITE



TRIPLEX-035 WHITE



TRIPLEX-036 WHITE



TRIPLEX-040 WHITE



TRIPLEX-054 WHITE



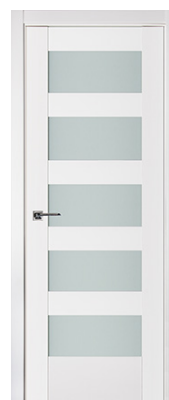
TRIPLEX-056 WHITE



TRIPLEX-057 WHITE



TRIPLEX-058 WHITE



TRIPLEX-059 WHITE

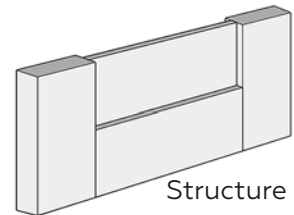


## Stile Series Interior Doors

The Stile Series offers over 10 design options. With slim, vertical frames defining the edges of the door's design, and available panels in 2.5", 5", and 10", this creates a central, eye-catching canvas for geometrical design innovation. Thin, metallic striping accents offer subtle shadowed effects on the surface of the door. Easily one of Nova Door's most unique and customizable options, the Stile Series offers a high quality feel and gliding swing.

### Features:

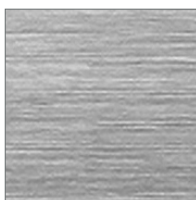
- Laminated Soft White Finish
- Stripe Colors Available
- Proudly Designed and Assembled in the USA And Overseas (DOM)
- 3-Year Warranty



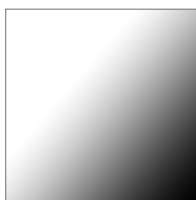
## Technical Specifications

Available Colors	White
Finish	Laminated Soft White Finish
Door Construction	Solid Pine Wood with Solid MDF Core
Door Slab Height	80, 84 and 96 inches
Door Slab Width (exact)	17-7/8", 23-7/8", 27-7/8", 29-7/8", 31-7/8", 35-7/8"
Door Thickness	1-3/4 inches (45mm)
Door Slab Weight	Medium Size - 70 Pounds
Jamb Width	Telescopic 4"-5 1/2" X 86" and 100", 3/4" thick Extensions Available for over 5 1/2"
Door Molding Width	3" - L-Shaped 86" and 100" Length 5/8" Thick
Custom Size	Any Width up to 44" and Height Up to 96" Inches
Custom Color	Over 200 Colors Available for Special Order (PROUD Catalog)
Sliding Jamb	Flat Jamb 4"-5 1/2", 3/4" thick (Bypass/Sliding) Extensions Available for over 5 1/2"
Pocket Jamb	3 Split Jambs 1 Flat Jamb (Per Single Door), 3/4" thick
Astragal	Double Door Astragal (Covers Gap Between the 2 doors)
Extension	2 1/2" X 5/8" X 86" and 100" (Used For Walls over 5 1/2" Thick)
Warranty	Leading 3-Year Structural Warranty

### Stripe Finishes for Select Models



Brushed  
Anodized



Brilliant  
Anodized



Brushed Gold  
Anodized



Shine Gold  
Anodized



Pre Painted  
Matte Black



Pre Painted  
Brilliant Black



STILE-001 WHITE



STILE-002 WHITE



STILE-003 WHITE



STILE-004 WHITE



STILE-005 WHITE



STILE-006 WHITE



STILE-007 WHITE



STILE-008 WHITE



STILE-009 WHITE



STILE-012 WHITE





STILE-013 WHITE



STILE-015 WHITE



STILE-017 WHITE



STILE-020 WHITE



STILE-021 WHITE



STILE-022 WHITE



STILE-023 WHITE



STILE-024 WHITE



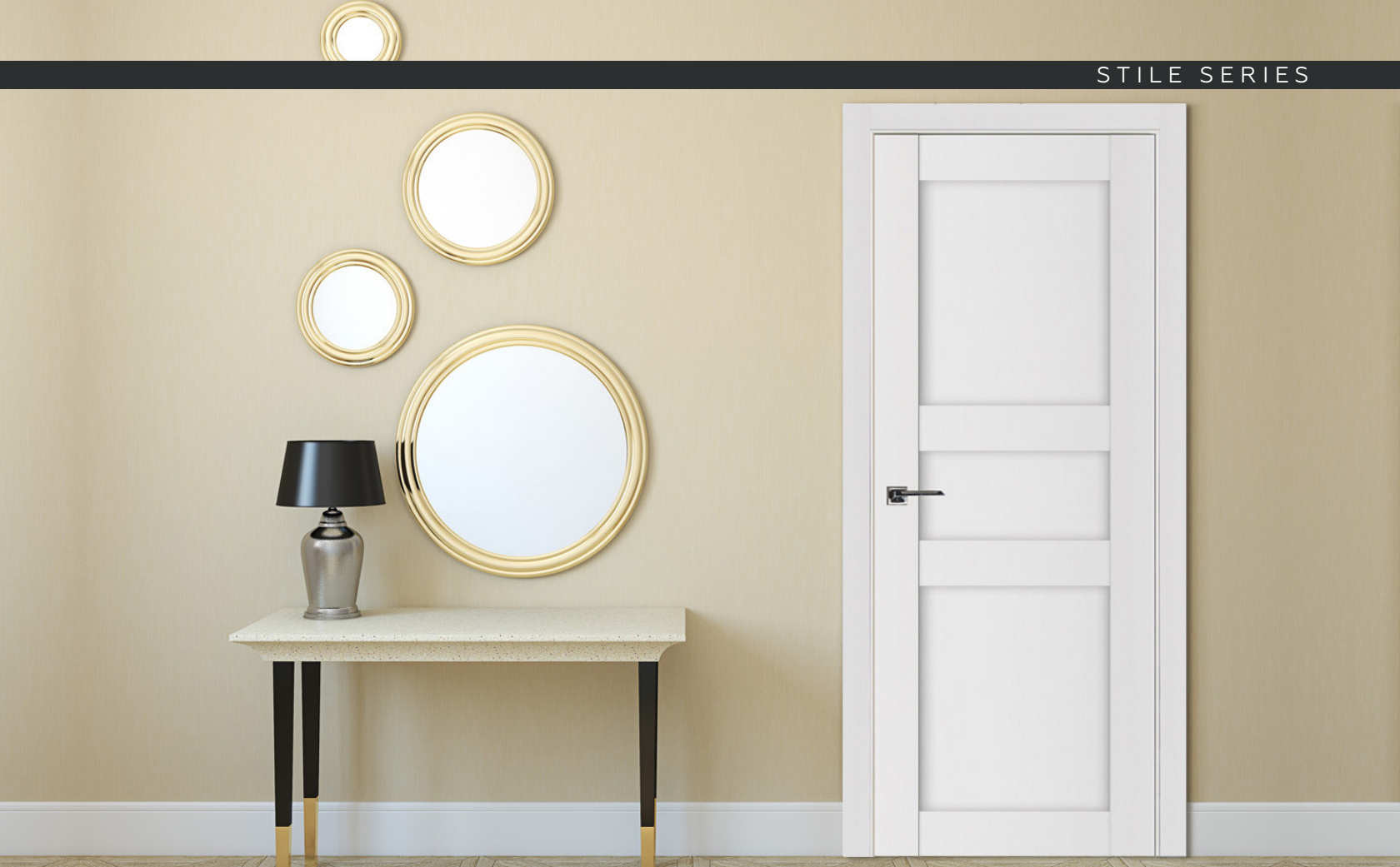
STILE-025 WHITE



STILE-029 WHITE







STILE-032 WHITE



STILE-035 WHITE



STILE-036 WHITE



STILE-039 WHITE



STILE-040 WHITE



STILE-041 WHITE



STILE-043 WHITE



STILE-044 WHITE



STILE-054 WHITE



STILE-059 WHITE

# Glam Series Laminated Interior Doors

The Glam Series is the epitome of simplistic, beautiful design. With pure color and shine, this range of interior doors is the apex when it comes to clean, modern design. It is available in all six standard widths with 80", 84" and 96" heights. This Series also offers both a thick honeycomb interior, and the thickest MDF layer available, at 10mm on each side. These features give the Glam Series excellent sound dampening benefits and a very solid feel. The Glam Series demonstrates great versatility with its 10 design options, and is ideal for several hanging options, such as barn door, sliding doors, and pocket doors. With so many options, it's easy to find a single door or a small collection of doors to fit your design preferences and space.

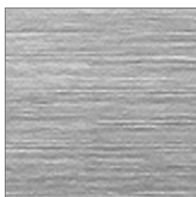
## Features:

- Laminated Soft White Finish
- Stripe Colors Available
- 3-Year Warranty

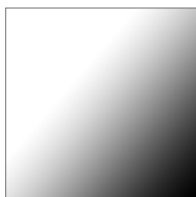
## Technical Specifications

Available Colors	White
Finish	Laminated Soft White Finish
Door Construction	Solid Pine Wood with Reinforced Foamed Panel (see page 53 for details)
Door Slab Height	80, 84 and 96 inches
Door Slab Width (exact)	17-7/8", 23-7/8", 27-7/8", 29-7/8", 31-7/8", 35-7/8"
Door Thickness	1-3/4 inches (45mm)
Door Slab Weight	Medium Size - 70 Pounds
Jamb Width	Telescopic 4"-5 1/2" X 86" and 100", 3/4" thick Extensions Available for over 5 1/2"
Door Molding Width	3" - L-Shaped, 86" and 100" Length, 5/8" Thick
Custom Size	Any Width up to 44" and Height Up to 96" Inches
Custom Color	Over 200 Colors Available for Special Order (PROUD Catalog)
Sliding Jamb	Flat Jamb 4"-5 1/2", 3/4" thick (Bypass/Sliding) Extensions Available for over 5 1/2"
Pocket Jamb	3 Split Jambs 1 Flat Jamb (Per Single Door), 3/4" thick
Astragal	Double Door Astragal (Covers Gap Between the 2 doors)
Extension	2 1/2" X 5/8" X 86" and 100" (Used For Walls over 5 1/2" Thick)
Warranty	Leading 3-Year Structural Warranty

## Stripe Finishes for Select Models



Brushed  
Anodized



Brilliant  
Anodized



Brushed Gold  
Anodized



Shine Gold  
Anodized



Pre Painted  
Matte Black



Pre Painted  
Brilliant Black



GLAM 001



GLAM 002



GLAM 003



GLAM 004



GLAM 005



GLAM 006



GLAM 007



GLAM 008



GLAM 009



GLAM 010



## High Gloss Laminated Series

Celebrating modern lines, monochromatic design and engaging with ambient light, the High Gloss Laminated Door Series befits any well-appointed contemporary space. Interior doors, these models are as durable as they are handsome. At the core, the premium door slab is solid and backed by a strong three-year structural warranty.

Smooth and shiny, the white high gloss of the structure is interrupted by horizontal panes of black glass for an opposing, eye-appealing, and modern aesthetic. For the greatest passage of light, the Sydney model boasts wide glass strips while the Ibiza model is more discrete wearing thin black glass panes to allow for more privacy.

Offered in two heights and six slab widths with a 1 ¾" thickness, doors of the High Gloss Laminated Series provide a solution for myriad interiors. As a NOVA door series, many components are customizable for just the right fit.

### Features:

- Premium PPL Finish
- High Gloss Enamel Finish
- Black Glass
- 2 Models to Choose From
- 3-Year Structural Warranty

## Technical Specifications

Available Colors	High Gloss White
Finish	Smooth High Gloss Finish
Door Construction	Solid Modular MDF and Pine Wood (see page 53 for details)
Door Slab Height	80" and 96"
Door Slab Width (exact)	17-7/8", 23-7/8", 27-7/8", 29-7/8", 31-7/8", 35-7/8"
Door Thickness	1-3/4 inches (45mm)
Door Slab Weight	Heavy Weight - 80 Pounds
Jamb Width	Telescopic 4"-5 1/2" X 86", 3/4" thick Extensions Available for over 5 1/2"
Door Molding Width	3" - L-Shaped 86" 5/8" Thick
Sliding Jamb	Flat Jamb 4"-5 1/2", 3/4" thick (Bypass/Sliding) Extensions Available for over 5 1/2"
Pocket Jamb	3 Split Jambs 1 Flat Jamb (Per Single Door), 3/4" thick
Extension	2 1/2" X 5/8" X 86" (Used For Walls over 5 1/2" Thick)
Warranty	Leading 3-Year Structural Warranty





SYDNEY



IBIZA

## Laminated Series Interior Doors

The Nova Laminated Series is one of the more affordable options. However, with over four hundred models and two hundred different finishes in each size, the Laminated Series is one of our best sellers. Its high quality materials and sturdy construction, with MDF over wood, make this a heavy, sturdy door excellent for soundproofing. The endless options of model and finish ensure that you'll find the style and design that speaks to you, with the highest quality material, all at an affordable price.

### Features:

- Premium Reinforce Core
- Many Colors available
- PVC Laminated Finish
- Smooth and Textured Finishes
- 3-Year Warranty

## Technical Specifications

Available Colors	Aloe Wood, White Wenge, Black Walnut, Pure White, etc
Finish	High Endurance PVC
Door Construction	Solid Pine Wood, MDF Reinforced, Foamed (Sound Proof Insulation) (see page 53 for details)
Door Slab Height	80, 84 and 96 inches
Door Slab Width (exact)	17-7/8", 23-7/8", 27-7/8", 29-7/8", 31-7/8", 35-7/8"
Door Thickness	1-3/4 inches (45mm)
Door Slab Weight	Medium Size - 50 Pound
Jamb Width	Telescopic 4" - 5-1/2" X 86" and 100" (Extensions Available for over 5-1/2")
Door Molding Width	3" - L-Shaped 86" and 100" Length 5/8" Thick
Custom Size	Any Width and Height Up to 96 Inches
Custom Color	Over 200 Colors Available for Special Order (PROUD Catalogs)
Sliding Jamb	Flat Jamb 4"-6", 3/4" thick (Bypass/Sliding) Extensions Available for over 6"
Pocket Jamb	3 Split Jambs 1 Flat Jamb (Per Single Door), 3/4 thick
Floor Baseboard	4" X 96" X 1/2" All Stock colors Available
Astragal	Double Door Astragal (Covers Gap Between the 2 doors)
2 Sided Panel	3/8" X 36" X 96" For Custom Sliding/Bifold/Pivot closet Doors
Extension	2 1/2" X 5/8" X 86" and 100" (Used For Walls over 6" Thick)
Warranty	Leading 3-Year Warranty



HG-008BA



HG-008JO



HG-008KM



HG-008WW



HG-008WD



HG-008SLW



M-34BW



M-34S



HM-419



1 Lite White Wenge



1 Lite 1H White Wenge



1 Lite 2HC White Wenge



1 Lite 2H White Wenge



1 Lite 3H White Wenge



2 Lite White Wenge



3 Lite White Wenge



4 Lite White Wenge



5 Lite White Wenge



6 Lite White Wenge





HG002V Japan Oak



HG002V Light Aloe



HG002V Dark Aloe



HG002VR Japan Oak



HG002VR Light Aloe



HG002VR Dark Aloe





1 Panel Soft White



2 Panel Soft White



2 Panel Arched Soft White



3 Panel Soft White



GROVE Soft White



OVALO Soft White



SLANT Soft White



5 Panel Soft White



M34 Soft White



GRAFFITI Soft White

# American Standard Interior Doors

- Brand May Vary
- Primed or Pre-Finished
- Hollow or Solid Core Available
- Many Size Options
- Glass Options



BD-001



BD-002



BD-003



BD-004



BD-005



BD-006



BD-007



BD-008



BD-009



BD-010



BD-011



BD-012



BD-013



BD-014



BD-015



BD-016





BD-017



BD-018



BD-019



BD-020



BD-021



BD-022



BD-023



BD-024



BD-025



BD-026



BD-027



BD-028



BD-029



BD-030



BD-031



BD-032



BD-033



BD-034



BD-035



BD-036

# European Pre-Finished Interior Doors

- Brand May Vary
- Pre-Finished
- Hollow or Solid Core Available
- Many Size Options
- Glass Options



BD-037



BD-038



BD-039



BD-040



BD-041



BD-042



BD-043



BD-044



BD-045



BD-046



BD-047



BD-048



BD-049



BD-050



BD-051



BD-052



BD-053



BD-054



BD-055



BD-056



BD-057



BD-058



BD-059



BD-060



BD-061



BD-062



BD-063



BD-064



BD-065



BD-066



BD-067



BD-068



BD-069



BD-070



BD-071



BD-072



BD-073



BD-074



BD-075



BD-076



BD-077



BD-078



BD-079



BD-080



BD-081







BD-082



BD-083



BD-084



BD-085



BD-086



BD-087



BD-088



BD-089



BD-090



BD-091



BD-092



BD-093



BD-094



BD-095



BD-096



BD-097



BD-098



BD-099



BD-100



BD-101



BD-102



BD-103



BD-104



BD-105



BD-106



BD-107



BD-108



BD-109



BD-110



BD-111





BD-112



BD-113



BD-114



BD-115



BD-116



BD-117



BD-118



BD-119



BD-120



BD-121



BD-122



BD-123



BD-124



BD-125



BD-126



BD-127



BD-128



BD-129



BD-130



BD-131



BD-132



BD-133



BD-134



BD-135



BD-136



BD-137



BD-138



BD-139



BD-140



BD-141





BD-142



BD-143



BD-144



BD-145



BD-146



BD-147



BD-148



BD-149



BD-150



BD-151



BD-152



BD-153



BD-154



BD-155



BD-156



BD-157



BD-158



BD-159



BD-160



BD-161



BD-162



BD-163



BD-164



BD-165



BD-166



BD-167



BD-168



BD-169



BD-170



BD-171





BD-172



BD-173



BD-174



BD-175



BD-176



BD-177



BD-178



BD-179



BD-180



BD-181



BD-182



BD-183



BD-184



BD-185



BD-186



BD-187



BD-188



BD-189



BD-190



BD-191



BD-192



BD-193



BD-194



BD-195



BD-196



BD-197



BD-198



BD-199



BD-200



BD-201



BD-202



BD-203



BD-204



BD-205



BD-206



BD-207



BD-208



BD-209



BD-210



BD-211





BD-212



BD-213



BD-214



BD-215



BD-216



BD-217



BD-218



BD-219



BD-220



BD-221



BD-222



BD-223



BD-224



BD-225



BD-226



BD-227



BD-228



BD-229



BD-230



BD-231



BD-232



BD-233



BD-234



BD-235



BD-236



BD-237



BD-238



BD-239



BD-240



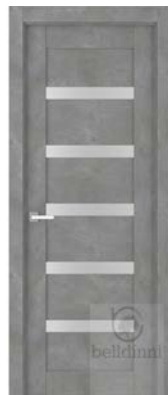
BD-241



BD-242



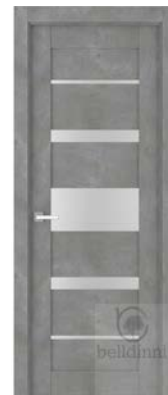
BD-243



BD-244



BD-245



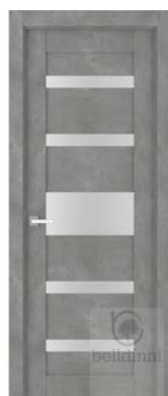
BD-246



BD-247



BD-248



BD-249



BD-250



BD-251



BD-252



BD-253



BD-254



BD-255



BD-256



BD-257



BD-258



BD-259



BD-260



BD-261



BD-262



BD-263



BD-264



BD-265



BD-266



BD-267



BD-268



BD-269



BD-270



BD-271



BD-272



BD-273



BD-274



BD-275



BD-276



BD-277



BD-278



BD-279



BD-280



BD-281



BD-282



BD-283



BD-284



BD-285



BD-286



BD-287



BD-288



BD-289



BD-290



BD-291





BD-292



BD-293



BD-294



BD-295



BD-296



BD-297



BD-298



BD-299



BD-300



BD-301



BD-302



BD-303



BD-304



BD-305



BD-306



BD-307



BD-308



BD-309



BD-310



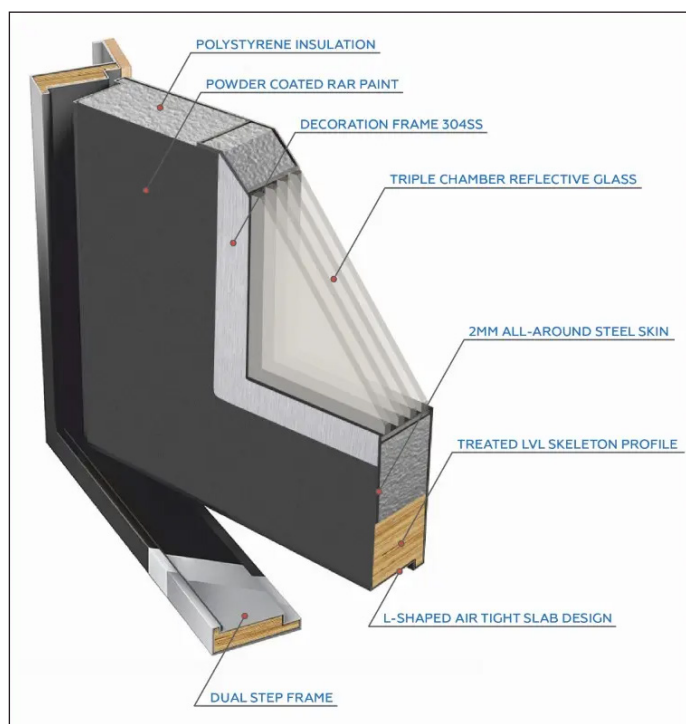
BD-311

## Inox Series Entry Doors

Set the stage for your modern home with an entrance to match. The exquisite Inox exterior doors by Nova Doors balance strength and transparency with reflective glass and stainless steel accents. Each design includes your choice for a high-grade finishing color, sidelight or transom installation, and additional trim. The 3.5-inch door is guaranteed to fit all standard American openings and is equipped with security that you can count on as well as 25 year industry leading warranty.

### Features:

- Reinforced Stainless Steel Door Edge
- Long Stainless Steel Bar Handle
- 3-Prong High Level Security Lock
- Line Welded Steel Door Frame
- Heavy Duty Welded Ball Bearing Hinges
- Reinforced Structural Steel Frame
- Thermoisolated Core
- Zinc Primer
- 3mm Solid Stainless Steel Protective Sheet
- Powder Coated Finished Steel Surface





INOX S1 BLACK



INOX S1 BROWN



INOX S1 GRAY



INOX S1 WHITE



INOX S2 BLACK



INOX S2 BROWN



INOX S2 GRAY



INOX S2 WHITE



INOX S3 BLACK



INOX S3 BROWN



INOX S3 GRAY



INOX S3 WHITE



INOX S4 BLACK



INOX S4 BROWN



INOX S4 GRAY



INOX S4 WHITE



INOX S5 BLACK



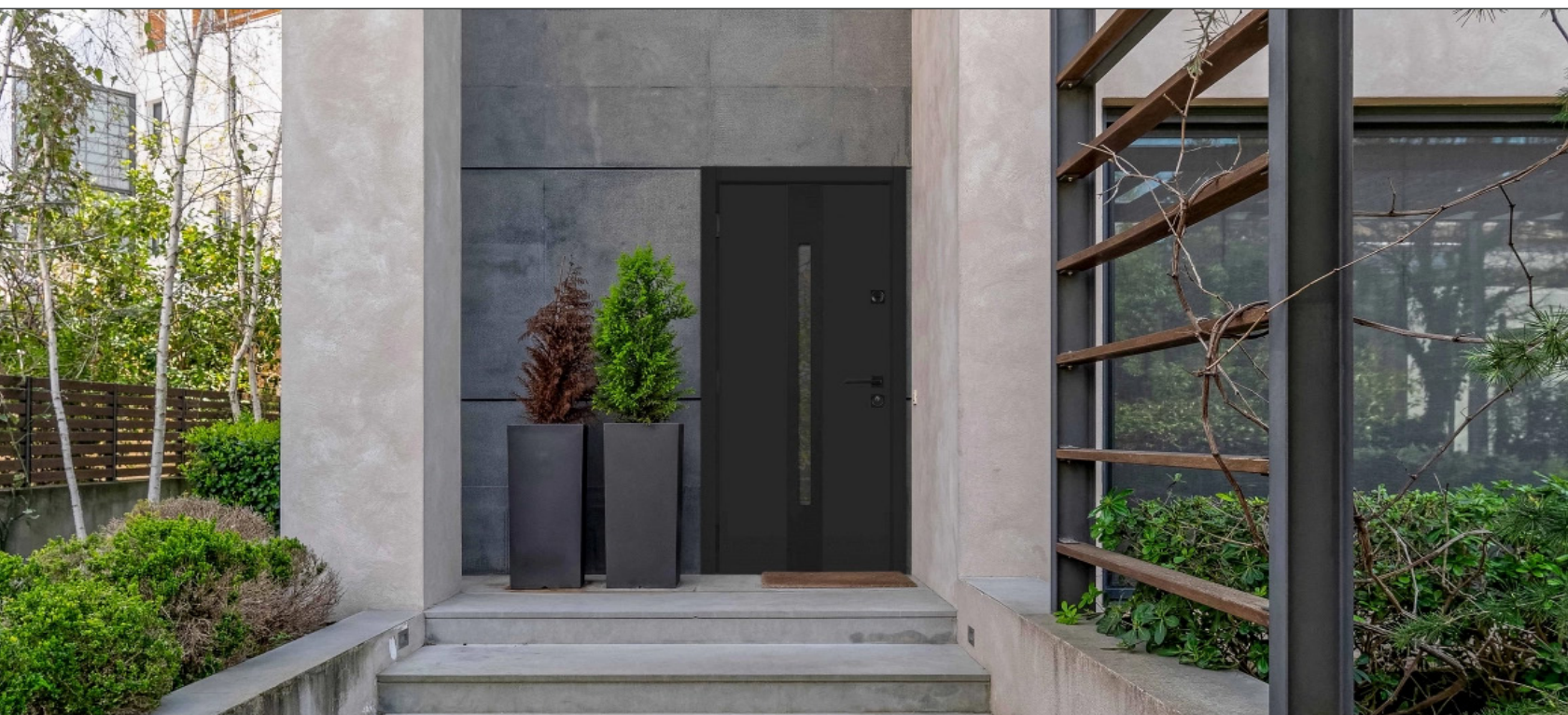
INOX S5 BROWN



INOX S5 GRAY



INOX S5 WHITE







## Available Configuration



SINGLE DOOR



LEFT SIDELIGHT



RIGHT SIDELIGHT



DOUBLE SIDELIGHTS



TRANSOM



LEFT SIDELIGHT &amp; TRANSOM



RIGHT SIDELIGHT &amp; TRANSOM



BOTH SIDELIGHTS AND TRANSOM



DOUBLE



DOUBLE W/ LEFT SIDELIGHT



DOUBLE W/ RIGHT SIDELIGHT



DOUBLE W/ BOTH SIDELIGHTS



DOUBLE W/ TRANSOME

DOUBLE W/ LEFT SIDELIGHT  
AND TRANSOMEDOUBLE W/ RIGHT SIDELIGHT  
AND TRANSOMEDOUBLE W/ BOTH SIDELIGHTS  
AND TRANSOME





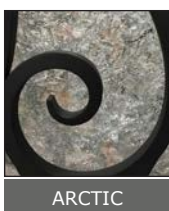
## Royal Series Wrought Iron Entry Doors

- Made of heavy 12 gauge steel.
- Hinged glass option allowing easy access for cleaning and ventilating.
- Mosquito screen option.
- Window lock controls the opening and closing of glass frame.
- Polyurethane foam layer adds insulation from the heat or the cold.
- All thresholds are hand- forged and fully-welded.
- All of our doors undergo a unique seven-step process: Sandblast, Zinc-coat, anti-corrosive prime, middle coat, top coat, faux finish, clear coat.
- Rubber weatherstripping is installed around the door frame and around the interior glass frame.
- Door sweep is installed underneath the door.
- Up and down extension ball latches are installed on all doors.
- On the lower half of the window, there is a small decline for water to run-off.
- All doors come with a standard deadbolt lock.
- Any size or custom design available.

### Glass Option



AQUATEX



ARCTIC



CLEAR



FROSTED



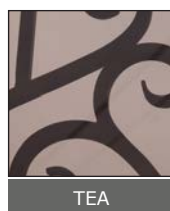
FROSTED TEA



GLACIER

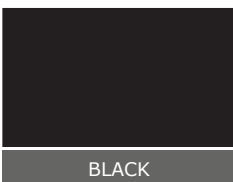


RAINSTORM



TEA

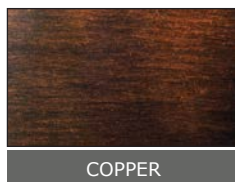
### Door Finish Option



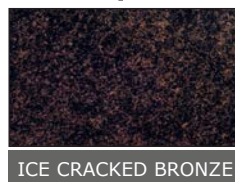
BLACK



BRONZE



COPPER



ICE CRACKED BRONZE



ICE CRACKED GREY



VEINED IRON GREY





ROYAL 001



ROYAL 002



ROYAL 003



ROYAL 004



ROYAL 005



ROYAL 006



ROYAL 007



ROYAL 008



ROYAL 009



ROYAL 010



ROYAL 011



ROYAL 012



ROYAL 013



ROYAL 014



ROYAL 015



ROYAL 016





ROYAL 017



ROYAL 018



ROYAL 019



ROYAL 020



ROYAL 021



ROYAL 022



ROYAL 023



ROYAL 024



ROYAL 026



ROYAL 027



ROYAL 028



ROYAL 029



ROYAL 030



ROYAL 031



ROYAL 032



ROYAL 033





ROYAL 034



ROYAL 035



ROYAL 036



ROYAL 037



ROYAL 038



ROYAL 039



ROYAL 040



ROYAL 041



ROYAL 042



ROYAL 043



ROYAL 044



ROYAL 045



ROYAL 046



ROYAL 047



ROYAL 048



ROYAL 049





ROYAL 050



ROYAL 051



ROYAL 052







ROYAL 053



ROYAL 054



ROYAL 055





BD-MS-01



BD-MS-02



BD-MS-03



BD-MS-04



BD-MS-05



BD-MS-06



BD-MS-07



BD-MS-08



BD-MS-09



BD-MS-10







BD-MS-11



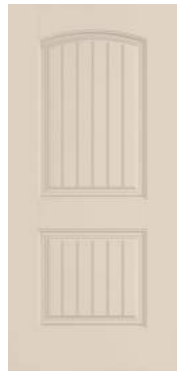
BD-MS-12



BD-MS-13



BD-MS-14



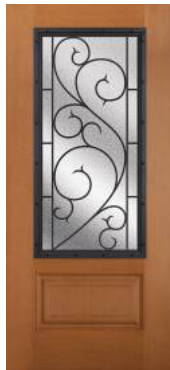
BD-MS-15



BD-MS-16



BD-MS-17



BD-MS-18



BD-MS-19

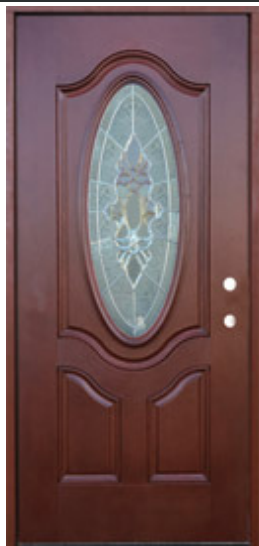


BD-MS-20





FIBERGLASS EXTERIOR DOORS



BD-FG-01S



BD-FG-01LS



BD-FG-01BS



BD-FG-02S



BD-FG-02LS



BD-FG-02BS



BD-FG-03S



BD-FG-03LS



BD-FG-03BS



BD-FG-04S



BD-FG-04LS



BD-FG-04BS



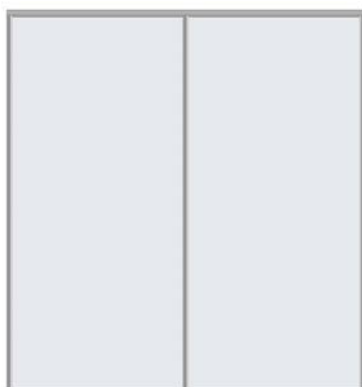
BD-FG-05S



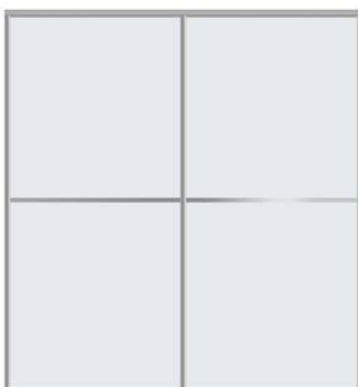
BD-FG-05LS



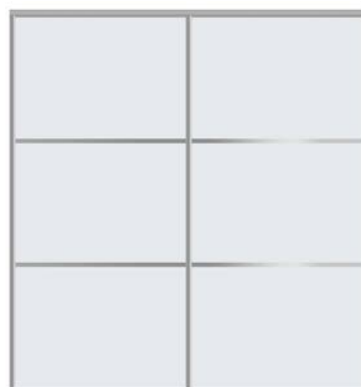
BD-FG-05BS



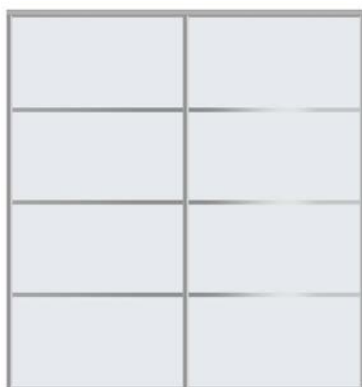
SD-S1



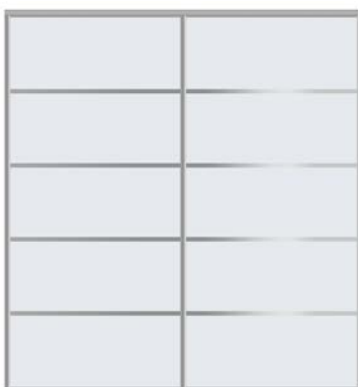
SD-S2



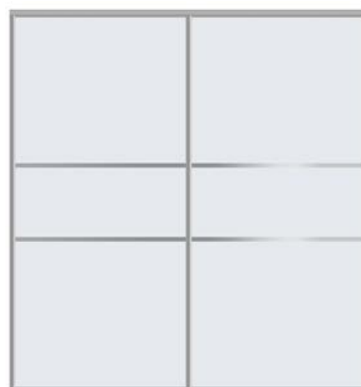
SD-S3



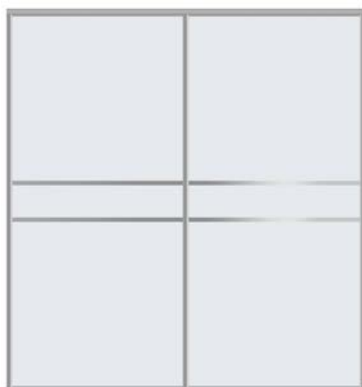
SD-S4



SD-S5



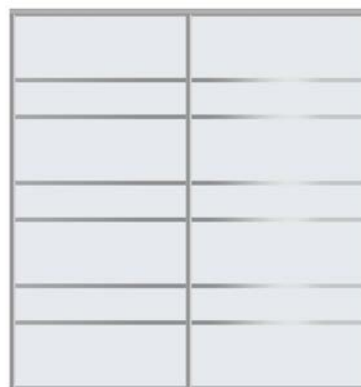
SD-S6



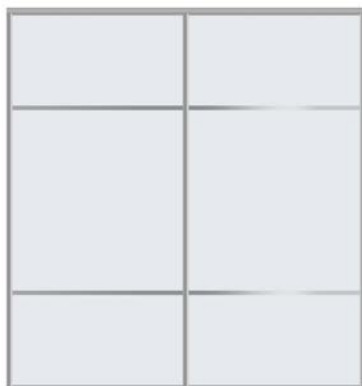
SD-S7



SD-S8



SD-S9



SD-S10



SD-S11

All doors are proudly made in the USA with a sleek premium German aluminum profile, available in 3 colors - Black, Silver and White.

Eleven premade design options can be personalized with any color of glass, mirror, or wood panel. Have something else in mind? Draw your own design and get doors custom-made for you. Custom height or width available.





BD-S1



BD-S2



BD-S3



BD-S4



BD-S5



BD-S6



BD-S7



BD-S8



BD-S9



BD-S10

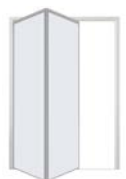


BD-S11

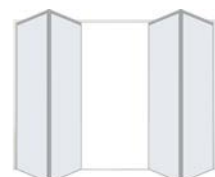
BI-FOLD DOORS POSSIBLE CONFIGURATIONS



LEFT TO RIGHT



RIGHT TO LEFT



DOUBLE



PD-S1



PD-S2



PD-S3



PD-S4



PD-S5



PD-S6



PD-S7



PD-S8



PD-S9



PD-S10



PD-S11

PIVOT DOORS POSSIBLE CONFIGURATIONS



LEFT TO RIGHT



RIGHT TO LEFT



DOUBLE



SD-13



SD-14



SD-15



SD-16



SD-17



SD-18



SD-19



SD-20



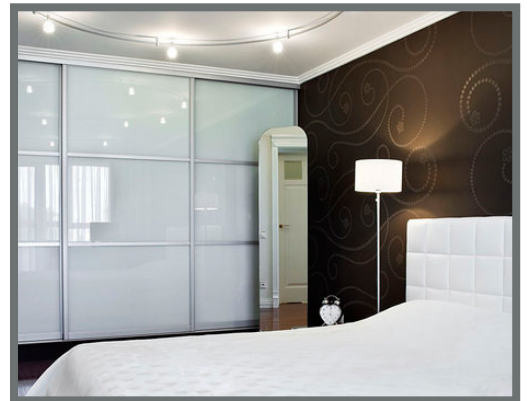
SD-21



SD-22

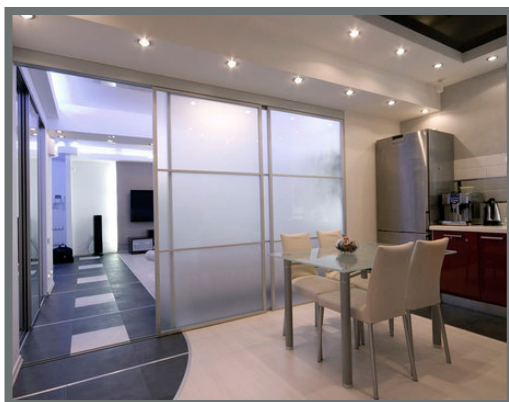


SD-23



SD-24





SD-25



SD-26



SD-27



SD-28



SD-29



SD-30



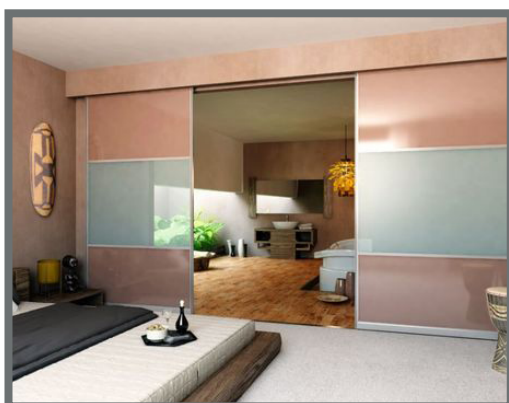
SD-31



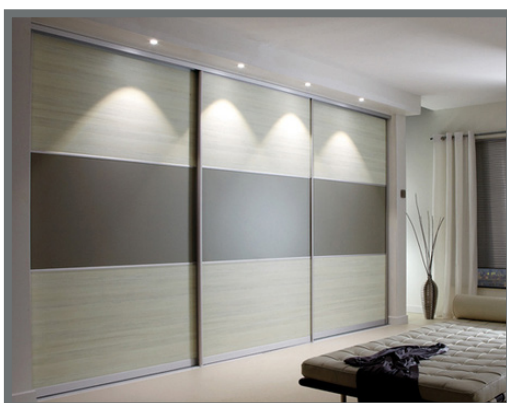
SD-32



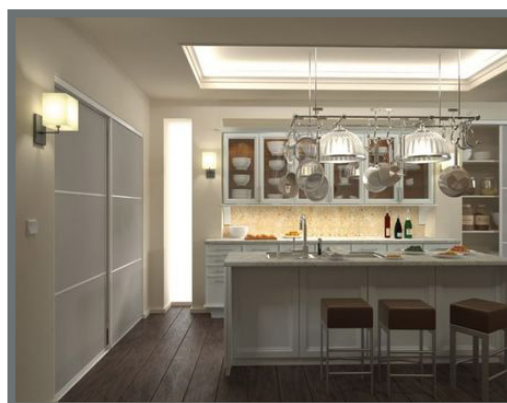
SD-33



SD-34



SD-35



SD-36





SD-37



SD-38



SD-39



SD-40



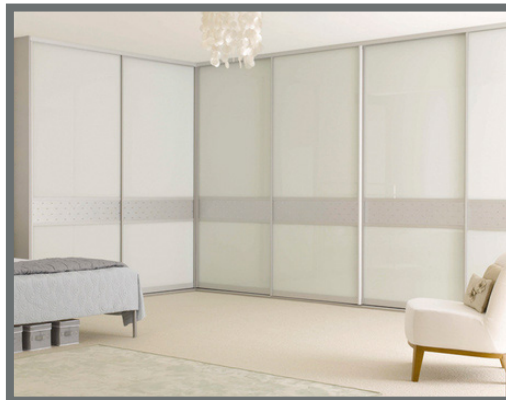
SD-41



SD-42



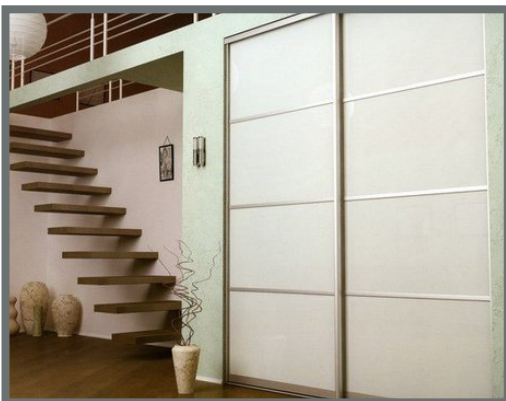
SD-43



SD-44



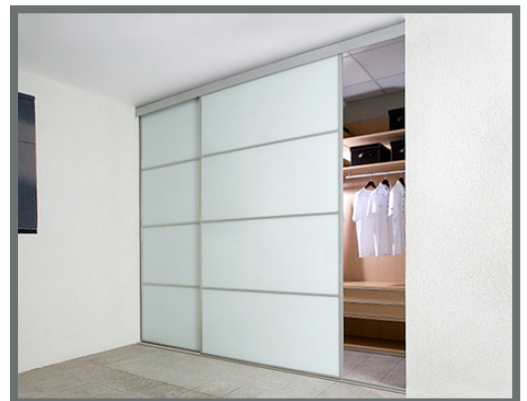
SD-45



SD-46



SD-47



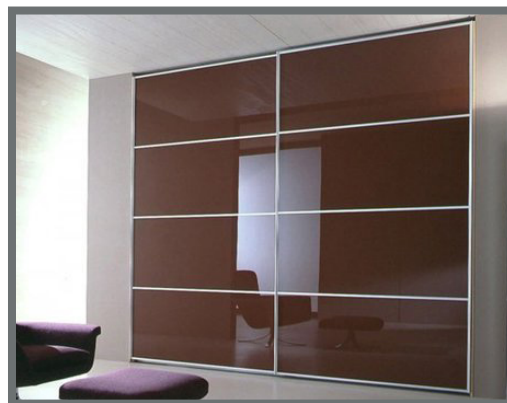
SD-48



SD-49



SD-50



SD-51



SD-52



SD-53

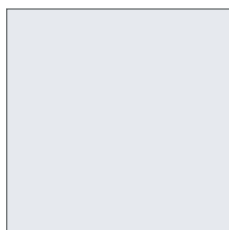


SD-54

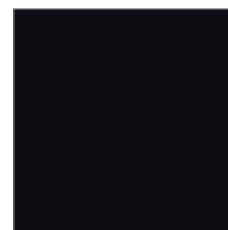
AVAILABLE PROFILE FINISHES



SILVER



WHITE



BLACK

AVAILABLE GLASS FINISHES

				
BEIGE	BLACK	BROWN	BURGUNDY	PINK
				
GREEN	SILVER GREY	WHITE	LIGHT RED	MIRROR

AVAILABLE PANEL FINISHES

				
LIGHT ALOE WOOD	LIGHT GREY	PRESTIGE BROWN	SWISS ELM	JAPAN OAK
				
KOREAN MAHOGANY	PURE WHITE	SAPELE	DARK ALOE WOOD	BLACK WALNUT
				
PREMIUM WENG	WHITE DRAWING	BLACK ASH	WHITE WENG	SOFT WHITE



# Wayne Dalton<sup>®</sup>

## GARAGE DOORS

From Custom Wood to Carriage House Steel to Contemporary Aluminum to Designer Fiberglass, we boast one of the largest residential garage door lineups in the industry. Homeowners have a wide variety of panel designs, window options and colors to choose from.

### ALUMINUM SERIES







FIBERGLASS SERIES



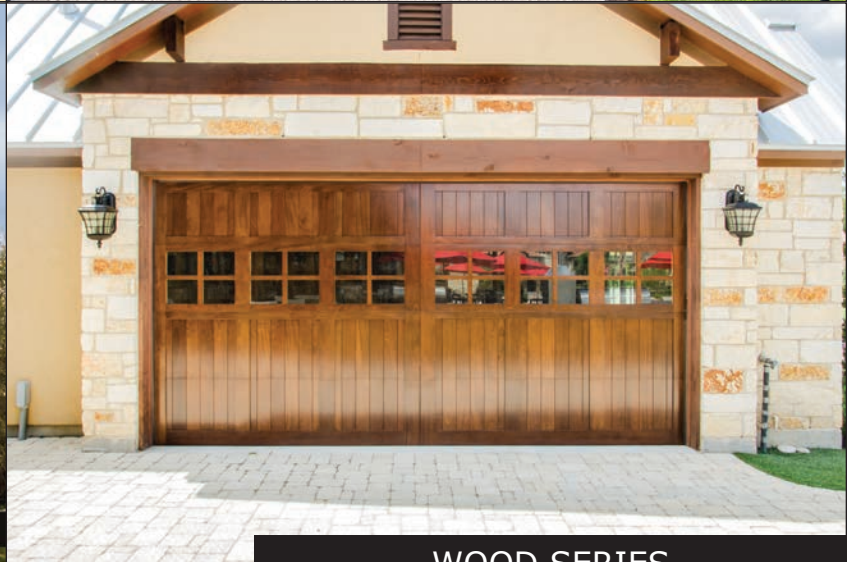




STEEL SERIES







WOOD SERIES

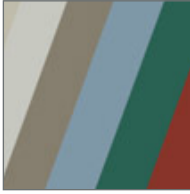




## STORM DOORS



A



Durable, oven-baked polyester finishes are backed by a Lifetime Warranty for lasting beauty and low maintenance.

C



All standard size storm doors are constructed with tempered safety glass.

E



Each door features quality hardware that adds beauty and functionality to your new storm door. Varies by model.

G



Smooth function is essential. That's why we include a quality door closer in every storm door package. Varies by model.

H



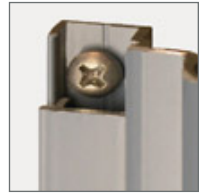
Our bottom expander with sweep allows for a beautiful custom-fit to any entry. Varies by model.

B



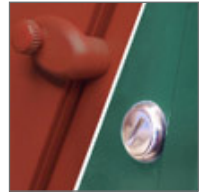
Extruded aluminum frame adds beauty to your door by virtue of the rounded cove molding along the glass edge of the extrusion.

D



You'll appreciate the finished look of our color matched aluminum installation screw covers.

F



Sashes are secured by our color matched polycarbonate clips or an internal sash lock system. Varies by model.

I



Corrosion-proof corner gussets enhance the structural integrity of the door.



Storm Doors are available for use in the Impact Shield regions. While storm doors help protect your entry door from the elements, they are NOT wind-borne debris tested, and therefore are NOT considered an Impact Shield Product.









PATIO DOORS





PATIO DOORS





## US Standard Hardware



MODERNUS



CURVE



SIMPLICITY



VENUS



SATURN



GRANATA



JUPITER



QUAD

## European Hardware



AQUILA



ARIES



DIAMOND



QUATRA



AURORA



LYRA



VEGA



VELA



QUAD BLACK



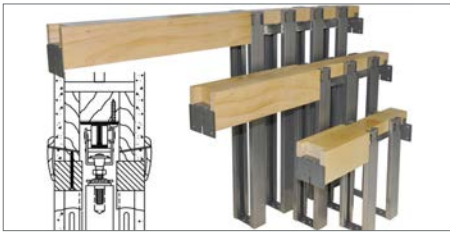
QUAD WHITE



ORION



# SLIDING • BI-FOLD • BYPASS



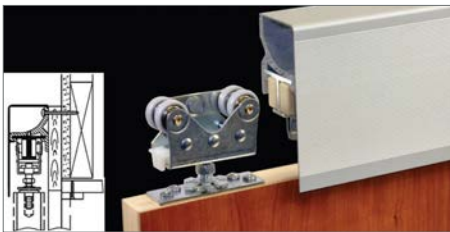
POCKET DOOR FRAME KITS



BI-FOLD DOOR HARDWARE



MULTI FOLD DOOR HARDWARE



WALL MOUNT SLIDING HARDWARE

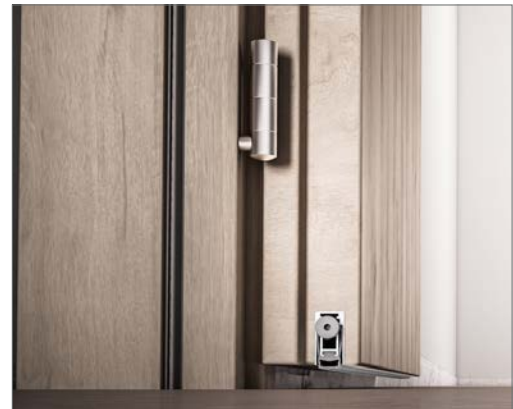
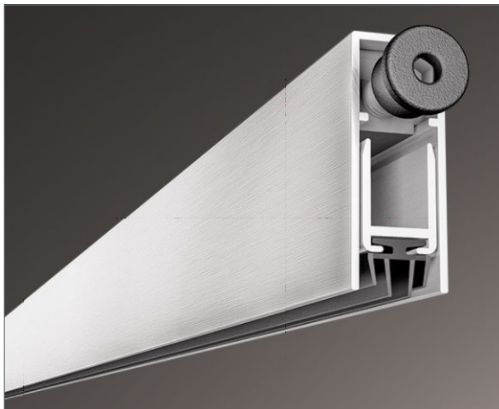


SLIDING BYPASS HARDWARE



MULTI-PASS HARDWARE

## Smart Sweep Door Hardware



## Barn Door Hardware



COUNTRY STYLE



MODERN WITH ROUND TRACK



MODERN WITH T-STYLE TRACK



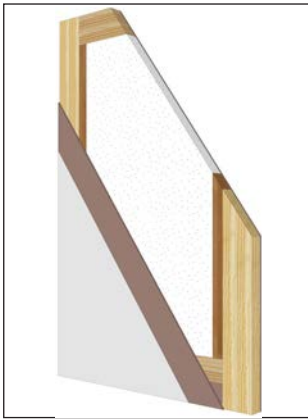
## Magic Sliding Door System

Invisible Sliding System for Wooden and Glass Doors

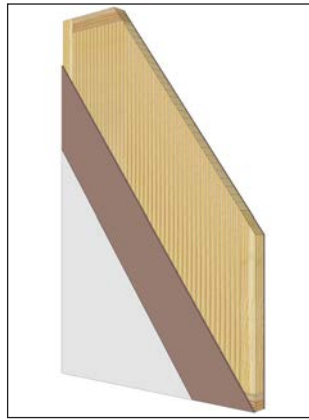




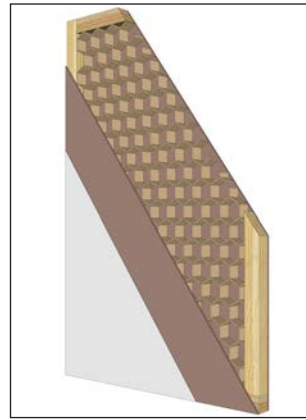
## Interior Door Core Variation



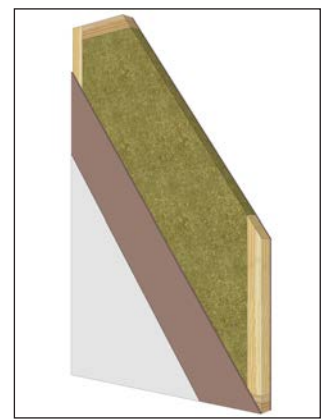
Solid Wood Skeleton with  
MDF and Styrofoam



Solid Wood Skeleton with  
Solid Wood Strips Core

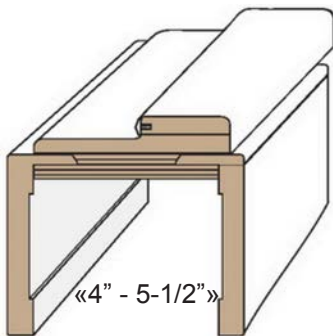


Solid Wood Skeleton with  
Honeycomb Core

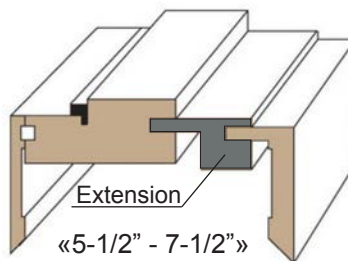


Solid Wood Skeleton with High  
Density Filler (Smart CORE)

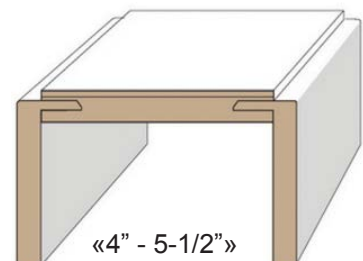
## Jambs - Casings - Extensions



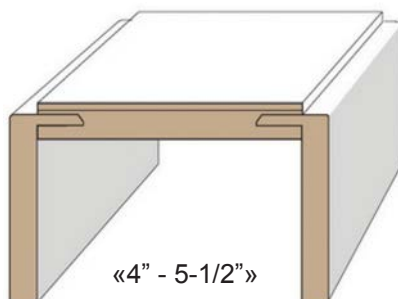
Single Rabbet Telescopic Jamb with  
Rubber Seal and L-Shaped Casing on  
Both Sides. Extension is Optional.



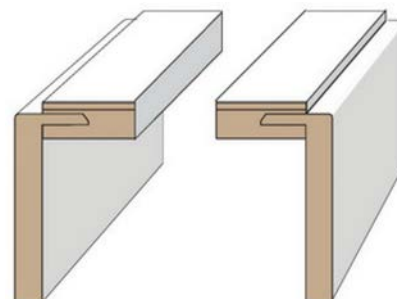
Jamb Extension to Accomodate Any  
Width of the Wall.



Sliding Door Jambs with Telescopic L-  
Shaped Casings. Extension is Optional.



Pocket Door Jambs with Telescopic L-Shaped Casings. Extension is Optional.



\* Matching Baseboards Available.



## Door Finish

- Primed - Coating that needs to be painted on site.
- Enamel Paint - 2 part paint process, thicker and more durable than traditional paint.
- PVC - Durable Laminated Coating.
- PPL - Scratch resistant, thicker finish available in textured options.
- Unfinished - Complete unfinished surface, needs to be primed, painted or stained.
- Wood Species - Natural wood to be stained (recommended).
- Wood Veneer - Available in unfinished and pre finished configuration.
- Fiber Glass - Man made material used for exterior doors.
- Steel - Steel doors made for exterior use.

## Slab Only Configuration

No Hinge or Handle / No Deadbolt Prep / No Frame / No Casings

- For use in existing frames or for sliding, bypass, pocket, barn or magic option.
- Keep in mind if installing into existing frames every manufacturer has different actual slab sizes. Some are prefit anywhere from 1/8 - 3/4 inches.
- Most Interior Doors Come In 3 Thicknesses 1-3/8", 1-1/2" and 1-3/4"

## Knock Down Configuration

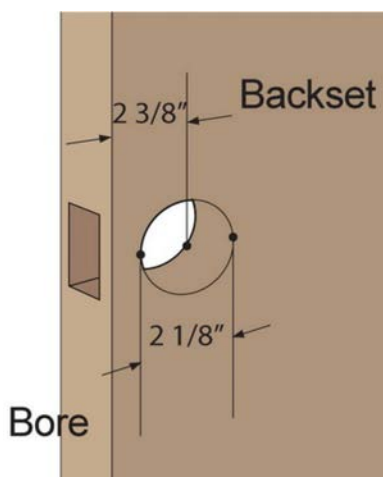
- Includes Door Slab, Frame and Casing Set
- Hardware is Optional (We recommend Butterfly Non-Mortise Hinges)
- No Hinge Prep, No Bore Prep
- For DIY Installation



## Pre-Hung Configuration

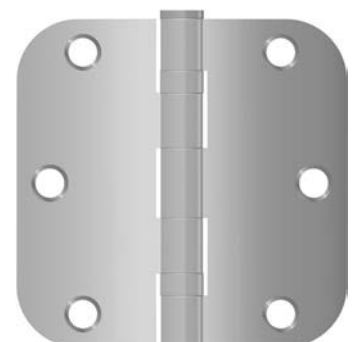
- Prepped and Assembled
- Most Popular Choice For Both Home Owners And Installers
- Faster and Easier Installation Process
- Door Slab is Pre-Cut For Hardware
- Door Is Installed on Frame Using Chosen Hardware
- Casings Cut On Site By Installer To Ensure Proper Fit

## US Standard Pre-Hung

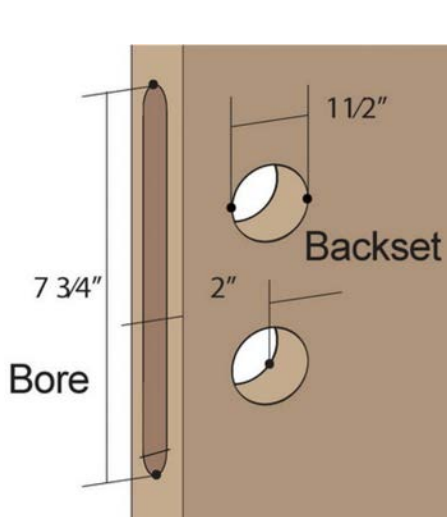


American Hole Bore:

- 2-3/8" Bore Backset is Standard.
- 2-3/4" Bore Backset Upon Request.
- Hung on Ball Bearing Mortise Hinges 3.5" x 3.5" x 5/8" Radius
- 3 Hinges for Doors up to 84 inches
- 4 Hinges for Doors over 84 inches
- Finish: Black, Brushed Satin Nickel, Polished Chrome, Polished Gold, Satin Gold



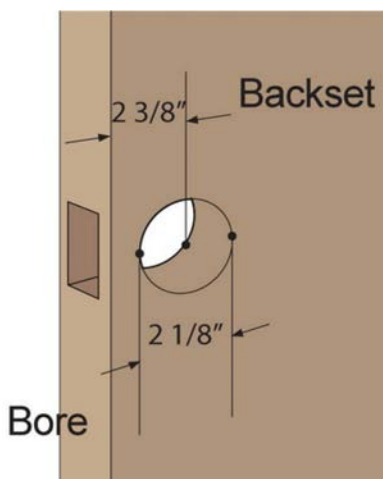
## European Standard Pre-Hung



- Hung on European Invisible Hinges.
- Sleek Modern Look as Hinges are not Visible.
- Hinges are Adjustable and Easy to Rectify any Issues After Installation.
- 2 Hinges for Doors up to 84 inches
- 3 Hinges for Doors over 84 inches
- European Magnetick Lock prepped and installed.
- Passage, Privacy or Keyed Function with Round or Square Trim Option.
- Smooth Operation.
- Slimmed European Trim



## Invisible 3D Hinges and US Lock Bore Pre-Hung



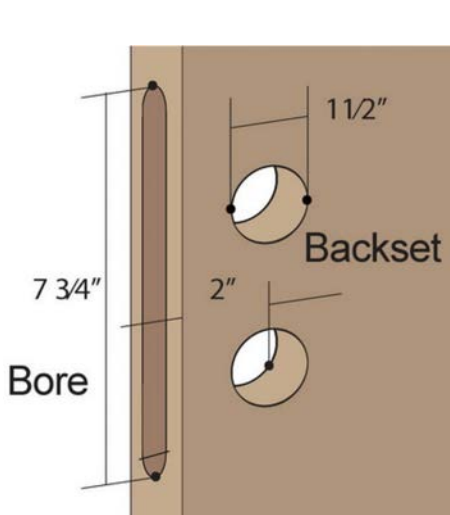
- Hung on European Invisible Hinges.
- Sleek Modern Look as Hinges are not Visible.
- Hinges are Adjustable and Easy to Rectify any Issues After Installation.
- 2 Hinges for Doors up to 84 inches.
- 3 Hinges for Doors over 84 inches.

### American Hole Bore:

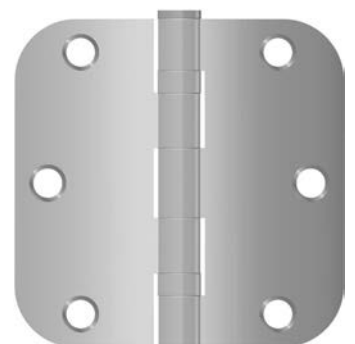
- 2-3/8" Bore Backset is Standard.
- 2-3/4" Bore Backset Upon Request.



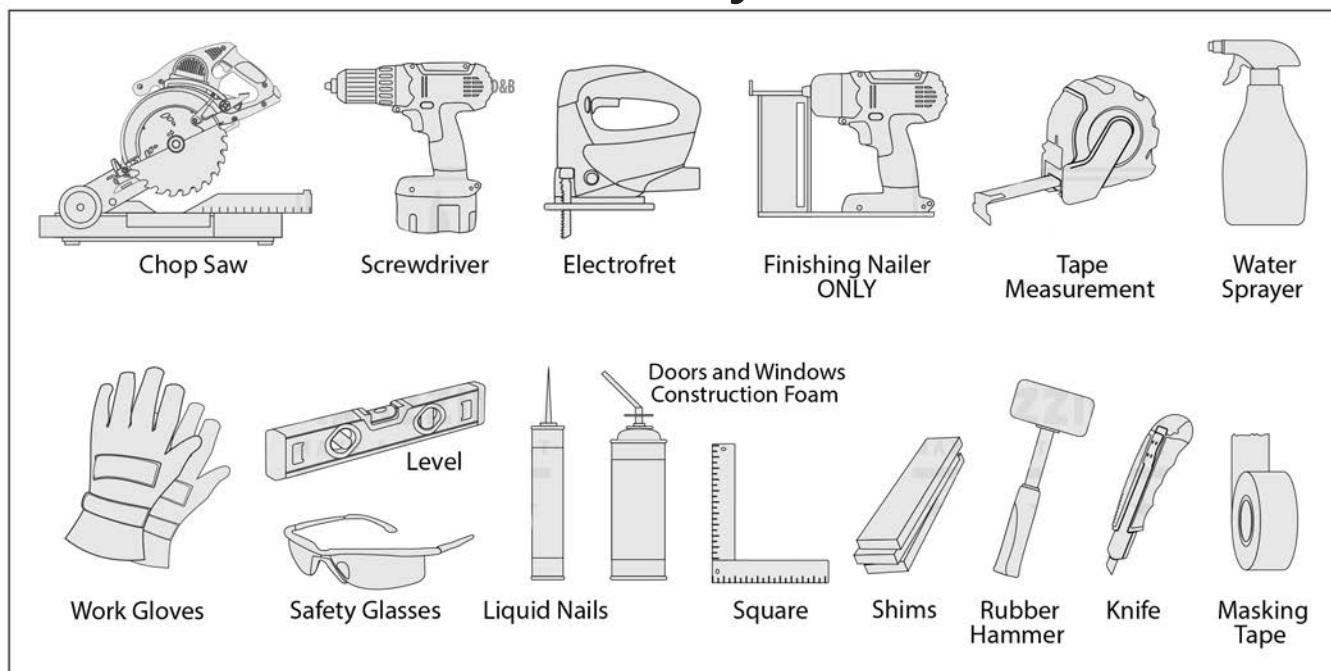
## European Lock Bore with Standard Hinges Pre-Hung



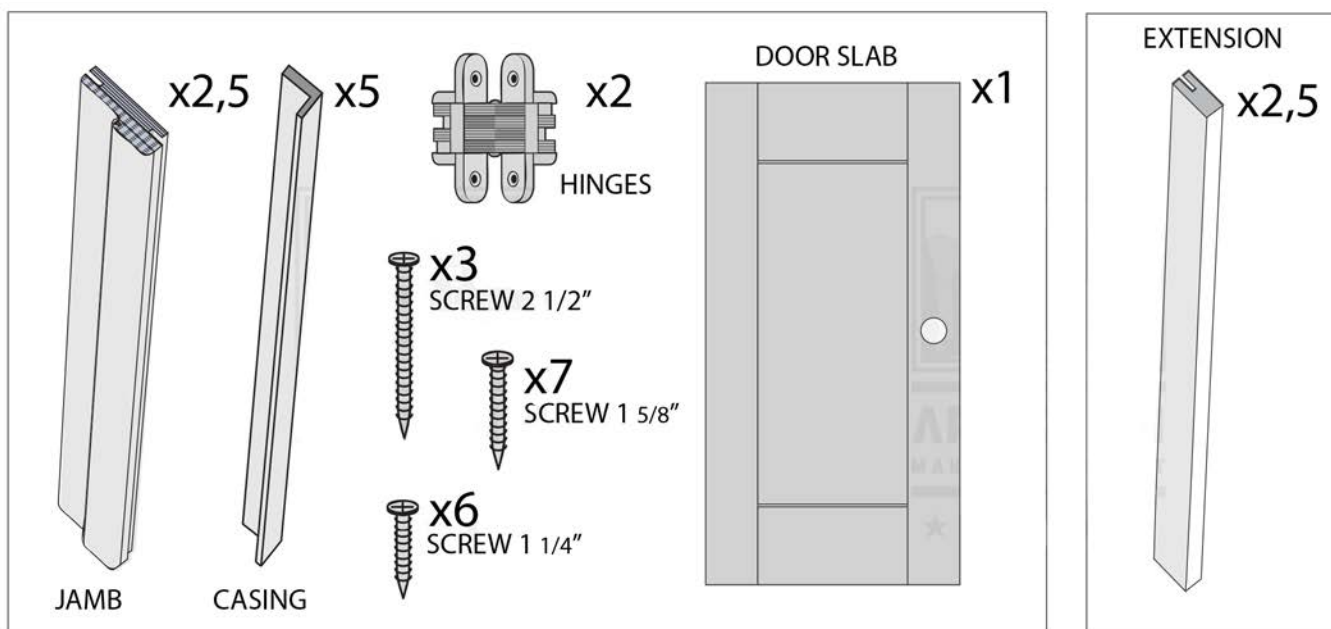
- Hung on Ball Bearing Mortise Hinges 3.5" x 3.5" x 5/8" Radius
- 3 Hinges for Doors up to 84 inches
- 4 Hinges for Doors over 84 inches
- Finish: Satin Nickel, Black, Gold, Chrome
- European Magnetick Lock prepped and installed.
- Passage, Privacy or Keyed Function with Round or Square Trim Option.
- Smooth Operation.
- Slimmed European Trim



## Necessary Tools



## Door Parts

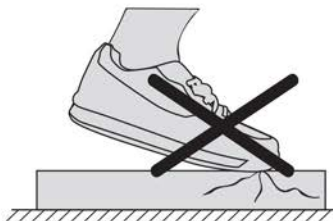


## WARNING!

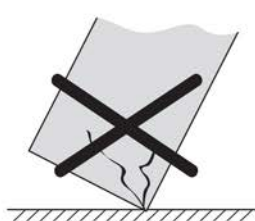
DO NOT USE STANDARD  
NAILS AND HAMMER



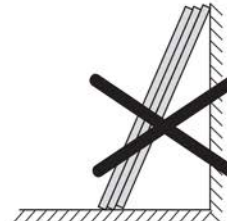
DO NOT STEP ON THE DOOR



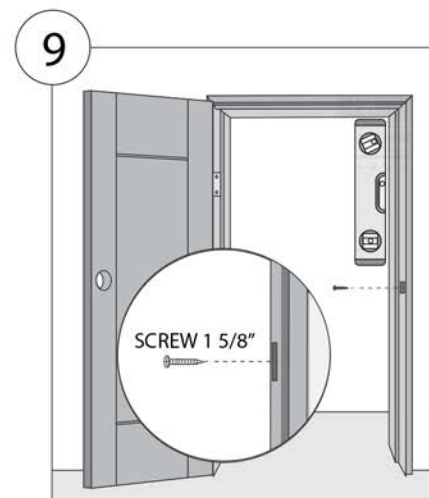
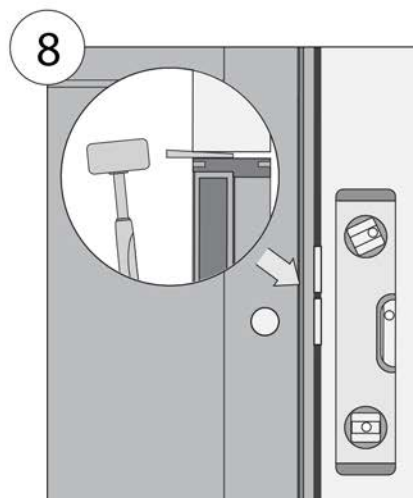
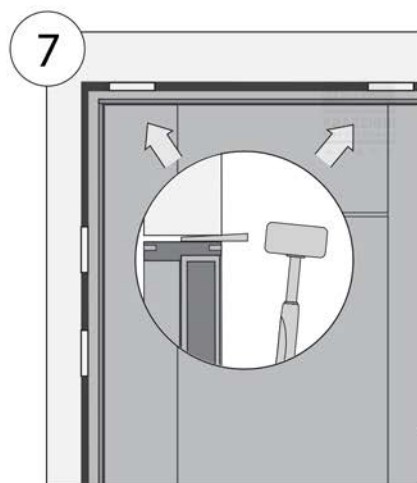
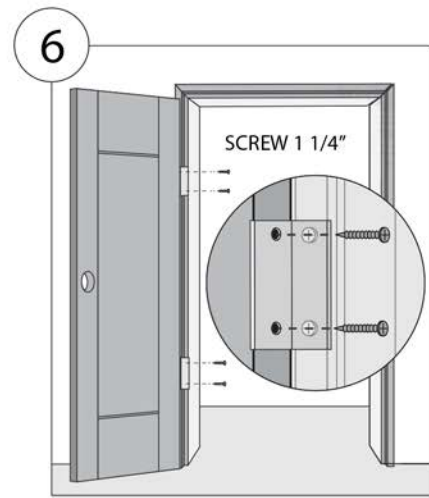
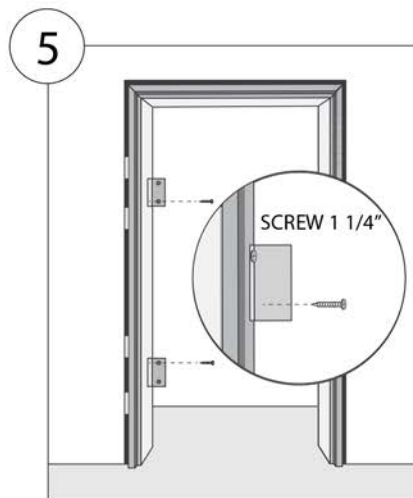
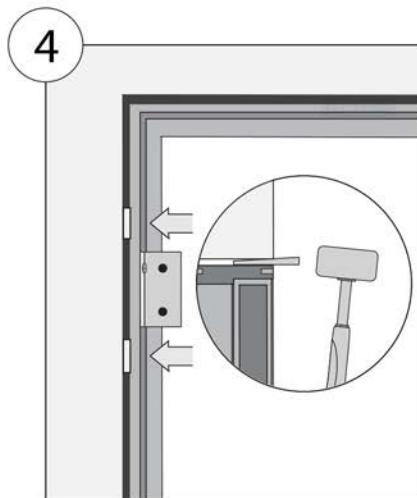
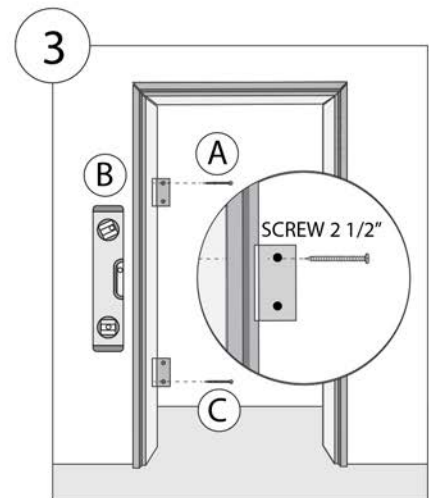
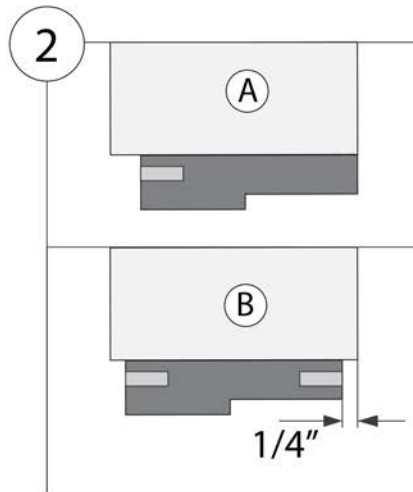
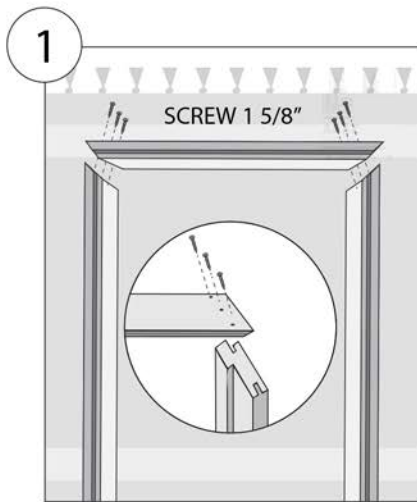
DO NOT LAY  
DOWN ON EDGES

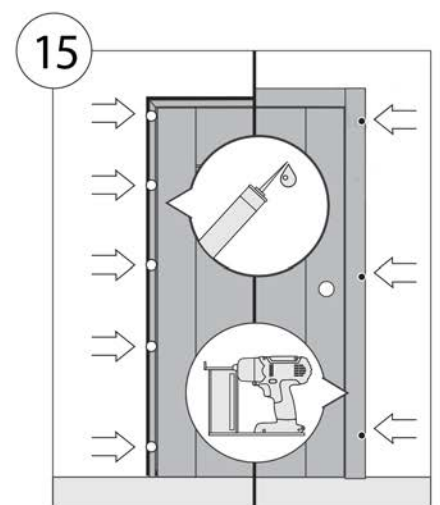
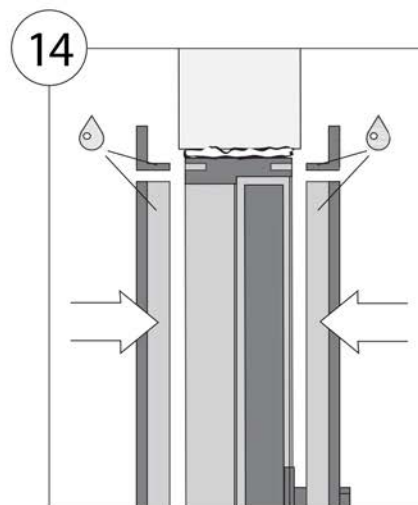
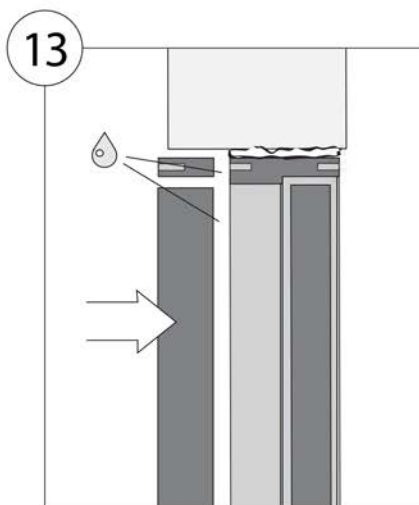
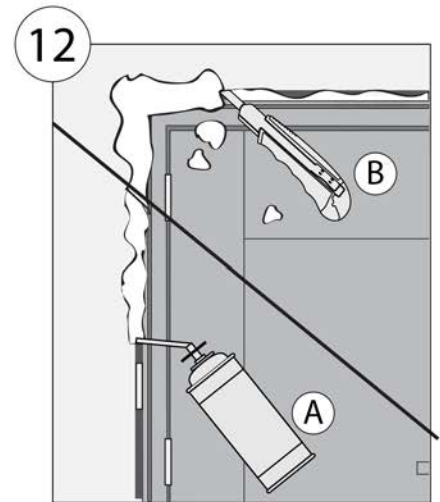
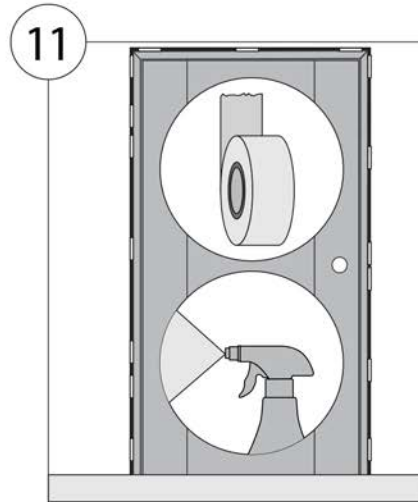
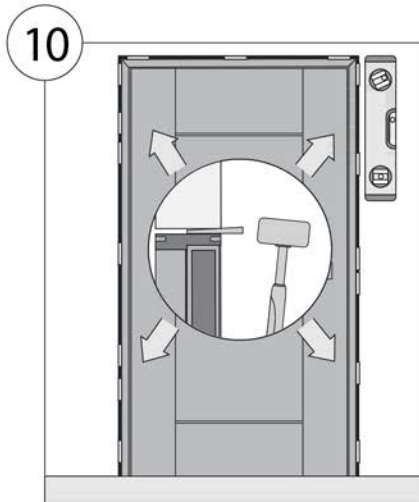


DO NOT LEAN  
ON THE WALL









Congratulations  
Installation Complete!

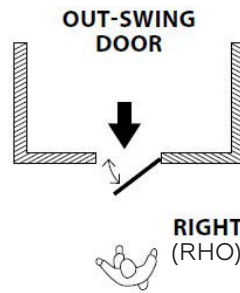
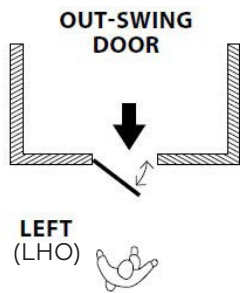
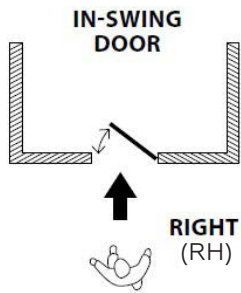
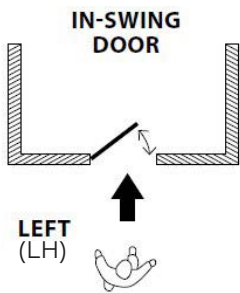
STANDARD INTERIOR DOOR SIZES

18" 24" 28" 30" 32" 36"

STANDARD OPENINGS

20" 26" 30" 32" 34" 38"

SWING DIRECTIONS



INTERIOR DOOR POSSIBLE CONFIGURATION



SINGLE



DOUBLE



POCKET



DOUBLE POCKET



BI-FOLD



BYPASS



MAGIC



BARN



## NOTES

[illegible]





WWW.DOORSINSTOCK.COM

888.703.0099

## OUR SHOWROOM LOCATIONS

---

### BROOKLYN

2501 CONEY ISLAND AVE  
BROOKLYN, NY 11223  
718.690.3030

### LONG ISLAND

300 FARMINGDALE RD  
FARMINGDALE, NY 11735  
516.701.0088

### PHILADELPHIA

6942 TORRESDALE AVE  
PHILADELPHIA, PA 19135  
267.302.0700

